

CLEVELAND HIGH SCHOOL ALUMNI NEWS



Volume 10, Issue 2

May 2004

CLEVELAND
HIGH SCHOOL ALUMNI
ASSOCIATION
P.O. Box 94004
Seattle, WA 98124-9404
www.clevelandalumsea.org

OFFICERS

President

Alison W. Sing '64
(425) 742-1782
e-mail: alisonwsing@earthlink.net

Vice President

Vera M. Chan-Pool '91
(253) 826-0456
e-mail: VEmehan@comcast.net
newsletter editor

Secretaries

Recording
Open

Membership

JoAnn Victor Smith '56
(425) 487-3952
e-mail: chsaja056@comcast.net

Treasurer

Terence L. Wong '58
e-mail: tlwong@tlwong.com

BOARD MEMBERS

Tracy Case Arnold '82
(253) 351-9820
e-mail: teachs82@hotmail.com

John Christiansen '64
(360) 493-1440
e-mail: jlc4glf@attbi.com

Pat Coluccio '47
(253) 852-4229
e-mail: p.coluccio@comcast.net

Roxane Sklar Jonson '84
e-mail: roxchs@hotmail.com

Bill Lantz '51
(360) 297-4487

James Louie '43
e-mail: abtoon2002@yahoo.com

Bernie Moskowitz '57
(206) 772-6285

Pat Rosenkranz '49
(360) 665-6207
e-mail: Patsbeck@pacifier.com

Cleveland Memorial Forest celebrates 60th anniversary

By Don Duncan '43

When students and alumni gather at the Cleveland Memorial Forest for this year's Memorial Day observance at 11 a.m. Friday, May 28, there will be special significance in the event. This year marks the 60th anniversary of the forest's existence as a living memorial to those Cleveland alums who paid the ultimate price in this nation's wars — from World War II through today's war on terror.

The No. 60 had special meaning for those who grew up before or during World War II. Back then, "going like 60" was to drive at truly break-neck speed, and those who lived to be 60 were expected to adopt a rocking chair and shawl, like Whistler's mother.

So happy 60th birthday, Cleveland Memorial Forest!

There will be no tests, but here's a brief history lesson. Back in 1943, when our nation was fighting wars across the Atlantic and Pacific oceans, Cleveland's Class of '43 collected money for the traditional senior-class gift to the school. But it couldn't decide what to spend it on.

The following year's class ('44) would have no such problem. After collecting money for its own gift, it was suggested that the money from the Classes of '43 and '44 be combined to purchase a "living memorial" to those alumni dying on the battlefields of World War II.

Then-Cleveland High School vice principal Ray K. Imus showed up at the county courthouse for a property auction with a check for \$300 in his pocket. He bid on a 131-acre tract just north of the little town of Issaquah. Speculators who might have entered the bidding and raised the price far beyond Imus' means graciously declined to bid.

Cleveland had its land. It also had a dream: to develop the forest into a nature preserve the school could share with students throughout the Seattle area.

Alas, reality intruded on the dream. One year after acquiring the property, principal Kenneth Selby decided that managing a large piece of timberland was more than one school could handle. He signed the property over to the Seattle School District.

The marriage between school and school district was what, before the 1900s, would have been called "a marriage of convenience." And the school district's attitude toward the forest could best be described as "benign neglect."

But, in truth, Cleveland's students and faculty didn't do much better. Most of the trail-clearing and repair of the forest's portable buildings over the years was done by Garfield High School students under the direction of science teacher **Tom Hudson '60**.

Time, weather and vandalism took their toll. And while trail-clearing was nice, it hardly matched the greater lessons that could be taught in a 131-acre classroom that had a creek wandering through its thick stands of hemlock, alder and fir.

Alumni were finally galvanized into action in the early 1990s, when rumors circulated that the school district might consider selling off the Memorial Forest, whose land and timber were now worth millions of dollars. Although the school board insisted it had no intention of selling the forest, skeptical alumni rallied to "save our forest."

In a show of good faith, the school district rededicated the forest in August 1995 as an Environmental Education Center. The effort was spearheaded by school-board president Linda Harris and school-board member Ellen Roe. The rededication was the first event attended by the school district's dynamic new superintendent, John Stanford.

Thanks to a \$155,000 Urban Resources grant from the U.S. Department of Agriculture, the

See FOREST, Page 2

Annual general meeting: Saturday, May 22, 10 a.m. @ CHS

Cleveland spirit remains strong in ever-changing Forest

FOREST, from 1

school district, in '95, also began restoring some of the forest's dilapidated facilities. Still, the sole user of the forest that year was not Cleveland High School students, but those from Hudson's Garfield High School science classes.

With alumni showing renewed interest in both the forest and their old school, the dormant Alumni Association was re-activated in 1996, with **Don Clifford '44** as president.

One of Clifford's major goals was to obtain on-site housing for a forest caretaker. He also saw establishment of an Oversight Committee to work with the school board toward improving the forest's facilities while Cleveland's interests.

The following year saw Cleveland hit the jackpot. It observed its 70th birthday with a day-long party that included a re-creation of the famous "Walk Up the Hill" from Georgetown by students and faculty (in 1927), a moving flag ceremony, chat rooms throughout the school and a standing-room only assembly.

The latter featured the Kings of Swing, a still-active swing band started at Cleveland in the mid-'40s, and appearances by Superintendent Stanford, former middle-weight boxing champion Al Hostak and members of the Johnny Cherberg-coached football team that won the city championship in 1937.

Also in 1997, **Don Case '48**, who succeeded Clifford as the Alumni Association president, worked with Clifford to institute an alumni-student memorial observance

trek to the forest.

Thanks to school-board member Ellen Roe, district buses transported students and alumni to the forest. A highlight of each trek is a walk to the Memorial Rock, whose plaques contain the names of Cleveland's war dead. The plaques have been updated each year by alumni **Roy and Lois Allen Olson**. Roy passed away this past year.

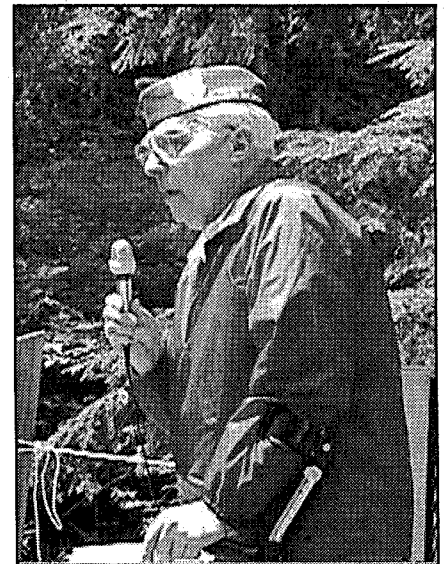
When it appeared the trek might be abandoned a few years ago, **Alison Sing '64**, the Alumni Association's current president, made sure it would live on.

At the 2002 Memorial Day Trek, family and friends of **James Rohletter**, a member of the '37 football team, presented a memorial flagpole to the forest. Attending were several members of the Rohletter and Cherberg families, the '37 football team and retired Chief Les Koehler, a Navy veteran who has been a prisoner of war with Rohletter. Koehler came from New York to attend the dedication ceremony

The flag was special, too, having been obtained by U.S. Sen. Patty Murray after being flown over the Capitol. It was presented to Rohletter's widow, **Karlynne Miller Rohletter '46**, by a Veteran of Foreign Wars Honor Guard member.

"Taps" were sounded by **Bernie Moskowitz '57**.

Cleveland has been far from forgotten by the school district in recent years. In 1998, when Linda Harris was awarded \$30,000 by Safeco in recognition of her efforts on behalf of the school district, Harris earmarked the money for Cleveland's Memorial Forest, to be admin-



World War II POW Tony Ferrucci '38, during the 2002 Memorial Day Trek.

istered through the Oversight Committee.

Just last year, Don Case, as treasurer of the Oversight Committee, spent the last of the Safeco money — along with a \$3,000 donation by the Alumni Association — to refurbish the caretaker's cabin in time for the 2003 Memorial Day Trek.

Tim Steedman, on-site caretaker since 2003, is a graduate of Garfield High School, where he was president of the Science Club and active in Boy Scout Explorer Post 84. He is currently a student at Bellevue Community College and lives full time at the forest.

Over the years, the forest has received the support of three school board presidents — Harris, Roe and Barbara Schaad-Lamphere — all of whom have served on the Oversight Committee. Largely through Schaad-Lamphere's efforts, \$250,000 has been earmarked for the forest from the Seattle School District's 2004 bond issue.

Top priority items now are a new lyeum, to replace the open-air meeting site that burned down several years ago, restrooms and a permanent caretakers building. And, of course, ongoing trail work, as this winter's wind and ice storms toppled an estimated 200 trees.

A lot of changes have occurred at the Memorial Forest in the last six decades. "Little" Issaquah is now a prime example of suburban sprawl. A King County park abuts the forest. And a canopy of the second-growth evergreens blots out the sun on all but the sunniest days.

This year's Trek chairman is **Pat Coluccio '47**. It promises to be a special event — from the opening prayer to the final note of "Taps" echoing through your very own forest.

June 6 marks the 60th anniversary of the D-Day Invasion at Normandy. Eleven months after the invasion, victory in Europe was announced.

Fortunately, we did not lose any men during the initial invasion of Normandy, but before victory was proclaimed, six of our honored dead were lost in the final encounters in Europe. These men were:

- James Collins (infantry), Oct. 10, 1944, in southern France
- Yoshito Noritake (infantry), Oct. 16, 1944, in southern France
- Jero Kanetome (infantry), Oct. 20, 1944, in southern France
- Eric John Zackrisson (Air Force), Dec. 6, 1944, in a plane crash in Foggia, Italy
- Robert Kennewick (Air Force), Dec. 9, 1944, in a plane crash in Germany
- Hugh Craven (infantry), April 16, 1945, in a mine explosion in Italy

Noritake, Kanetome and Kennewick are buried at Washelli Cemetery in Seattle. Zackrisson is buried in the Florence-American Cemetery in Florence, Italy. Burial locations for Collins and Craven are unknown at this time.

Veterans of Normandy are encouraged to share their memories with us.

— Pat Rosenkranz '49

please cut along line

2004 Contributions

To help with costs (including newsletters to more than 8,000 alumni and former teachers — and growing), we ask you to join the Cleveland High School Alumni Association. A suggested donation of \$5 per year is requested.

Make checks payable to: CLEVELAND HIGH SCHOOL ALUMNI ASSOCIATION, P.O. BOX 94004, SEATTLE, WA 98124-9404

SUGGESTED DONATION OF \$5 EACH FOR MAILINGS \$ _____

DONATION TOWARD CHS ALUMNI ASSOCIATION (check appropriate box and indicate amount) \$ _____
(contributions totaling \$100 or more will be noted as Eagle 100 members for that year only)

ALUMNI GENERAL FUND \$ _____ MEMORIAL FOREST FUND \$ _____

CHS ATHLETICS FUND \$ _____ SCHOLARSHIP FUND \$ _____

TOTAL CHECK ENCLOSED \$ _____

check if address correction

MEMBER NO. 1 [FIRST, (MAIDEN), LAST] _____ CLASS _____

MEMBER NO. 1 [FIRST, (MAIDEN), LAST] _____ CLASS _____

ADDRESS [CITY, STATE, ZIP CODE] _____

PHONE NO. () _____ E-MAIL _____

I AM INTERESTED IN SERVING ON A CHSAA COMMITTEE (indicate committee) _____

In remembrance

The Cleveland High School Alumni Association remembers our fellow alumni who have passed away.

2002

(not included previously)

Anna Rossi Zipp '32
Jack Henrickson '36
Ruth Tonkin Pavone '37
George W. Stevens '37
Francis Williamson '34
Gerald C. Myers '38
Patricia Robinson Roberts '43
Marilyn Maurer Weber '49
David M. Hahn '54
Thomas Wallace 1958
George Fullenwider '65



2003

Irma Tarp Guidi '28
Enrico Galliano '32
Margaret Schuehle Smith '33
Edward A. Frangello '35
Harold Pavone '37
Bayne Lamb '38
Murdock Blakesley '39
Frances Wilson '39
Barbara Jean Hilliker '41
Virginia Williams Orcutt '42
Rudy Corwin '43
Jean Gilbertson '44
Mary Jean Haugen Cook '46
Gordon E. McKay '46
Shirley Douglas Raggio '46
Martha A.P. Roberts Wiley '47
Charlene Geisert '49
Don Mustello '49
Norman "Mickey" McKay '52
Al Reid '53
Phyllis A Walker Danson '56
Charles Illes '57
Thomas Kubota '57

Honorariums

In honor of George Fullenwider '65
from Stella Frank Drager '31
and Teresa Fullenwider,
for the Scholarship and Memorial Forest funds

In memory of Al Ferrier '49
from Loretta Holmes Ferrier Ward

In memory of
Patricia Robinson Roberts '43
from Carole Robinson Matta '48
and Marion Robinson Heimig '34
for the Cleveland Memorial Forest

In memory of Tom Kubota '57
from Ed Haarmann '57
and Kay Phillips Haarmann '57

In memory of
Ellis and Virginia (Baer) Roscoe '38
from Kazuko (Umino) Bill '38

In memory of Roy Olson '45
from Margaret Iylha Berre '45,
for the Scholarship, Memorial Forest
and general funds

In honor of George Weidum
from Catherine Krisenich Weidum '40,
for their 60th anniversary

◆ ◆ ◆
**CLEVELAND HIGH SCHOOL
ALUMNI ASSOCIATION**
Mission Statement

A nonprofit organization, Washington and United States 501(c)(3), founded for the exclusive purposes of: (1) preserving the Cleveland Memorial Forest as a memorial in perpetuity to those Cleveland students who gave their lives in the service of the United States of America, (2) supporting the educational uses in forestry, ecology, botany and environmental studies of the forest and (3) supporting and assisting the students and staff of Cleveland High School in Seattle, Wash., in their educational purposes.

Any individual who has attended Grover Cleveland Junior or Senior High School is entitled to be a member of the Cleveland High School Alumni Association.

Please help us to keep the database current by sending a post office change-of-address form or contact the membership secretary when you move. In order to protect privacy the list of memberships will not be distributed to anyone unless it is used specifically for the purposes of class reunions or other such gatherings.

**CLEVELAND HIGH SCHOOL
ALUMNI ASSOCIATION**
P.O. Box 94004
Seattle, WA 98124-9404

Nonprofit Org.
U.S. Postage
PAID
Seattle, WA
Permit No. 2571

UPCOMING events

MAY

- 22 CHSAA annual meeting/board elections, 10 a.m.-noon
@ CHS (send board nominations to Tracy Case Arnold,
teachs82@hotmail.com)
- 28 Memorial Day observance @ Cleveland Memorial Forest,
Issaquah, 11 a.m.-2 p.m.
Bus transportation from CHS available
Contact: Pat Coluccio, (253) 852-4229 or
p.coluccio@comcast.net

JUNE

- 5 CHSAA board retreat, 10 a.m.-3 p.m. @ Fort Lewis Golf
Course

AUGUST

- 6 CHSAA Golf Scramble, 1-9 p.m. @ Fort Lewis Golf Course
Contact: John Christiansen, (360) 493-1440 or
jlc4glf@attbi.com
- 14 Class of 1964 reunion
Museum of Flight, 9404 E. Marginal Way S., Seattle
Free admission, 5-6 p.m.
Catered dinner, 7 p.m. (\$60/person by June 15;
\$80/person thereafter)
Contacts: John Christianson, (360) 493-1440 or
jlc4glf@attbi.com or Mimi (Scott) Iwami, (206) 328-0688
or m.iwami@juno.com
- Beacon Hill Grade School all-years reunion
Contact: June Anderson Evanoff, (206) 232-3646 or
Pat Coluccio, (253) 852-4229 or p.coluccio@comcast.net

SEPTEMBER

- 11 Class of 1954 reunion
Glen Acres Golf & Country Club, Burien
No-host bar, 5:30 p.m.; surf & turf dinner, 6:30 p.m.
(\$35/person)
Contact: John & Mary Lou (Zarkades) Barton,
(425) 432-9592 or barzarl@worldnet.att.net

OCTOBER

- 2 CHSAA board meeting, 10 a.m.-noon @ CHS
15 Deadline for submissions to CHSAA fall newsletter
Contact: Vera Chan-Pool '91, VEmchan@comcast.net

NOVEMBER

- 11 Veterans Day observance @ Cleveland Memorial Forest,
Issaquah, 11 a.m.-2 p.m. (details forthcoming)
20 CHSAA board meeting, 10 a.m. @ CHS

DECEMBER

- 15 Deadline for submissions to CHSAA winter newsletter
Contact: Vera Chan-Pool '91, VEmchan@comcast.net

OPEN

- Classes of 1930s reunion
Contact: JoAnn Smith, (425) 487-3952 or
chsaajo56@comcast.com
- Class of 1955 reunion
Contact: Betty Stewart, via Classmates.com e-mail
- Class of 1984 reunion
Contact: Dottie Chin, (206) 940-2686 or d5172@yahoo.com